

# INNOVATIVE SOLUTIONS FOR YOUR NATURAL GAS APPLICATION NEEDS

THE NATURAL  
CHOICE FOR ALL  
OF YOUR GAS  
NEEDS

## ECCO

## EQUIPMENT CONTROLS COMPANY



**ECCO maintains an extensive inventory of gas pressure regulators, gas meters, couplings, shut-off valves, gas filters, strainers and gauges, and emergency solenoid shut-off valves.**

With years of combined product and system experience, our experts use their unique applications knowledge and technical skills to understand your project requirements and suggest the best product solutions for the job.

Whether you are assembling a bid package and need specifications, planning new construction or a retrofit project, or repairing an existing system, ECCO consistently delivers the best solutions for our clients needs.

**800.554.1036**

**sales@equipmentcontrols.com**



**Pietro Fiorentini**

A global leader in designing and construction of components and systems for natural gas control, metering and treatment.



**UTILITY SOLUTIONS GROUP**

High-quality, versatile gas regulators made in the USA.

**BelGAS**

BelGAS is a leader in the design and manufacturing of high pressure regulators, low pressure regulators, and flow control products.

**SENSUS**

Manufacturer of meters and pressure regulators that enable customers to better manage, measure and control operations.



**ROMET®**

Designer and manufacturer of positive displacement rotary gas meters, electronic volume correctors and auxiliary equipment.



UL-Listed, hermetically-sealed Eter gas boosters are designed for the 21st century.

**ASCO®**

ASCO solenoid valves control critical flow from two-position on/off valves to flow control systems.



Titan Flow Controls strainers remove unwanted debris from the pipeline, protecting expensive equipment downstream.

**Pacific Seismic Products**

Manufacturing ASCE 25-06 listed seismic actuated valves for residential, commercial and industrial applications.

# REGULATORS AVAILABLE FOR A VARIETY OF APPLICATIONS FROM SMALL BURNERS TO EXTREMELY HIGH PRESSURES AND CAPACITIES



- Highest turndowns available 500:1 and 1000:1 capabilities
- ANSI Z21.80 Compliant
- Installed inside or outside
- Ventless configurations available
- Wide range of pressure and flows



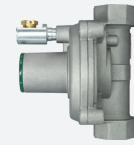
### GOVERNOR

PIPE SIZES:  
1/2" through 4"  
7.25 PSIG\*



### GOVERNOR W/ OPD

PIPE SIZES:  
1/2" through 4"  
10 PSIG

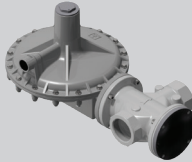


### PF400

PIPE SIZES:  
3/8" & 1/2"  
10 PSIG\*

### CIRVAL

PIPE SIZES:  
1-1/4" -2" FLGD  
75 PSIG



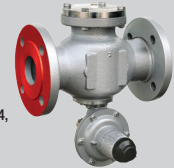
### DIVAL

PIPE SIZES:  
1" through 2" FLGD  
290 PSIG



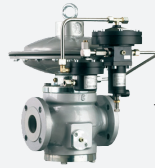
### DILOCK

DiLock 75: 1" x 1"  
DiLock 125: 1" x 1 1/2"  
DiLock 1080: 1", 1 1/4 x 1 1/4,  
1 1/2 x 1 1/2, 2" x 2"



### NORVAL

PIPE SIZES:  
1" through 8" FLGD  
275 PSIG



### REVAL

PIPE SIZES:  
1" through 10" FLGD  
363 PSIG



### APERVAL

PIPE SIZES:  
2" through 4" FLGD



### MOD FE MOD FEX

PIPE SIZES:  
3/4"-1-1/2"  
125 PSIG



- Flexible mounting options
- Full range of service and line pressure regulators
- Manufactured in accordance with ANSI B109
- Outdoor or indoor use



**496**  
PIPE SIZES: 3/8" through 1"



**143-80**  
PIPE SIZES: 3/4" through 1 1/4"



**243**  
PIPE SIZES: 1 1/4" through 2" FLGD



**243-RPC**  
PIPE SIZES: 1 1/4" through 2" FLGD



**243-8HP**  
PIPE SIZES: 1 1/4" through 2" FLGD



**121**  
PIPE SIZES: 1" through 4" FLGD



**122**  
PIPE SIZES: 1" through 2 1/2"



**441**  
PIPE SIZES: 2" through 6" FLGD

## Meters for small to very large capacities:



**ROMET** ROTARY



**SENSUS** DIAPHRAGM



**TURBO**



**ULTRASONIC**

## Speciality items available include:



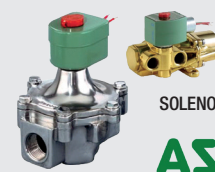
GAS  
BOOSTERS



"Y"  
STRAINERS



SEISMIC  
GAS SHUT-OFF  
VALVES



SOLENOID VALVES



Delivering quality solutions for your control valve, actuator and regulator needs since 1965.

800.554.1036 sales@equipmentcontrols.com

equipmentcontrols.com