

GAS•TRAC LZ30

L A S E R M E T H A N E G A S D E T E C T O R

INDUSTRY LEADING • 2 YEAR WARRANTY



Methane Selective

Continuous Detection

100 Ft Detection Range

Visual, Audible & Tactile Alarms



GAS•TRAC® LZ-30

Quickly and safely detect methane gas leaks in difficult to reach areas.

The LZ-30 from SENSIT Technologies is a compact methane-specific leak detector that provides fast and accurate readings at distances up to 100 feet.

The LZ-30 utilizes TDLAS (tunable diode laser absorption spectroscopy) technology to provide instantaneous and accurate responses to the presence of methane.

Designed to be competitively priced, the LZ-30 is perfect for hard to reach areas, eliminating the need to directly access the gas plume, climb to elevated areas, access fenced-in property and potentially hazardous situations through windows.

NEW

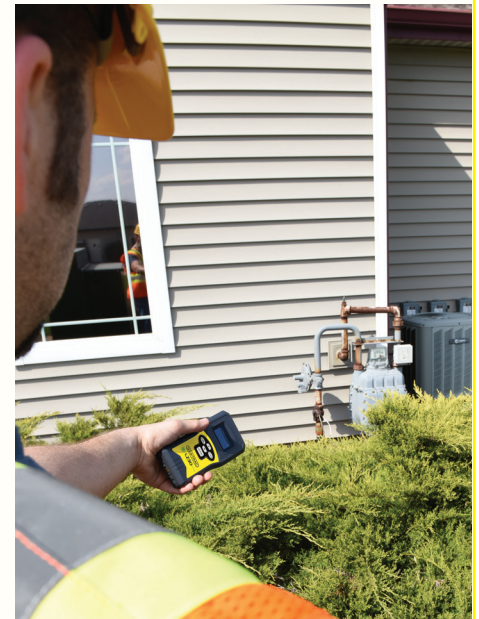
**SMART-LINK
LIVE**

application meets the growing demand for tracking and traceability. It allows the user to keep their eyes on the target while data streaming from the LZ-30 is captured within the application. The application logs date, time, GPS coordinates and gas measurements. Sessions can be exported from the phone/tablet in multiple formats. With built-in picture capture, the user can associate any reading with a picture or even report a corrosion issue.



Standard Features

- Methane selective
- Continuous detection
- Adjustable alarm points (visual & audible)
- Intrinsically safe design
- Ergonomic design
- Easy to maintain
- Cal Cell integrated in carrying case
- Rechargeable battery
- Low cost of ownership
- Industry Leading 2-year warranty (including battery)



Applications

Natural Gas Industry

- Upstream
- Midstream
- Downstream

Emergency Response

- Fire, Hazmat and Rescue

Industrial

- Steel Industry
- Petrochemical Facilities
- Paper and Pulp Production
- Many More!



SPECIFICATIONS

Detection Technology:	Tunable Diode Laser Absorption Spectroscopy (TDLAS)
Methane Detection Range:	0-50,000ppm-m in 1ppm-m increments
Sensitivity:	5ppm-m \leq 15m (50ft)/10ppm-m \leq 30m (100ft) @ \geq 300ppm-m
Response Time:	\leq 0.1 seconds
Detection Distance:	0.5m to 30m (1.5' to 100')
	Distance may vary depending on reflection
Distance Indicator:	0.2m to 30m (6" to 100')
	Range may vary depending on reflection
Beam Dimension:	Conical, 20cm diameter at 30m (8" at 100')
Alarms:	Adjustable threshold alarm with baseline: Visual, audible, and tactile
Warnings:	High/Low reflection, low battery
Calibration/Bump Test:	Carrying case incorporates calibration/bump test cell.
Laser classifications:	IR laser (methane detection) Class 3R
	Target laser (green) Class 3R
	Distance laser (red) Class 3R
Communication:	Bluetooth. Supported by Android.
Display:	OLED
Operational Temp:	-20C to 50C (-4F to 122F)
Storage Temp:	-40C to 60C (-40F to 140F)
Humidity:	5 to 95% non-condensing
Enclosure:	Designed to meet IP54
Intrinsic Safety:	Designed to meet US and ATEX
Weight:	300g (0.7lbs)
Size:	164mm (6.5") x 78mm (3.0") x 36mm (1.5")
Power Source:	Internal Lithium Ion
Battery Life:	6 Hours Continuous
Recharge Time:	3 to 4 Hours
Languages Supported:	English, French, German, Italian, Polish, Spanish



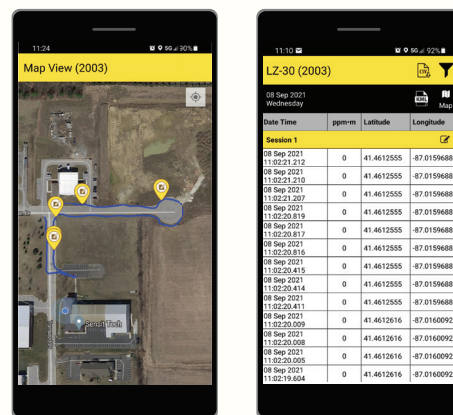
STANDARD KIT

Hard Carrying Case
Integrated Calibration/Bump Test Cell
Charger Base with Wall Transformer
Protective Boot
Wrist Strap
Instruction Manual

LANGUAGES SUPPORTED

English
French
German
Italian
Polish
Spanish

SMART-LINK LIVE



- Free 30-day Trial
- Real time tracking
- Route mapping (GPS coordinates, ppm*m, Date/Time)
- Capture pictures/videos
- Exportable .CSV/.PDF/.KML file formats
- Session Naming
- Data Filtering
- Built-in database w/backup
- Android Support (IOS coming soon!)

GAS•TRAC® LZ30 Accessories & Replacement Parts



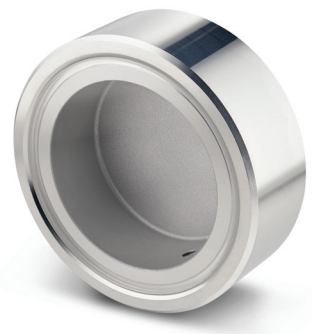
Hard Carrying Case with Foam

Part # 872-00035



Protective Boot

Part # 870-00098



Calibration / Bump Test Cell

Part # 882-00150-SN



Charging Kit with Power Supply

Part # 871-00074
For Units With Protective Boot



Wrist Strap

Part # 360-00040



LZ30 Instruction Manual

Part # 750-00080	English
Part # 750-00080-01	French
Part # 750-00080-02	German
Part # 750-00080-03	Italian
Part # 750-00080-04	Polish
Part # 750-00080-05	Spanish



851 Transport Drive
Valparaiso, IN 46383-8432

Phone: 888 4SENSIT
888 473 6748
219 465 2700

Fax: 219 465 2701
www.gasleaksensors.com

SENSIT Technologies
is an ISO 9001:2015 certified company.



Distributed by:

