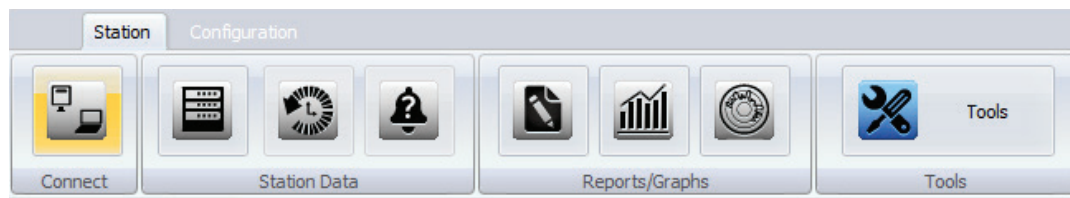


Field Manager™ is a Windows® based application specifically designed to support all Eagle Research Corporation® products within one common platform. Field Manager™ provides an easy-to-use feature set to assist users with 1) Setup and Configuration, 2) Data collection, 3) Viewing alarms/events, and 4) Device calibrations. It also includes a variety of other useful tools for troubleshooting and reporting. Communication to the field device is handled through USB, Ethernet, an RS232 communications cable, or using the optional Bluetooth interface. An extensive library of configuration databases simplifies the identification of standard device types in the field. The software matches the field device to a corresponding device type automatically and displays the appropriate graphical configuration forms for the user.

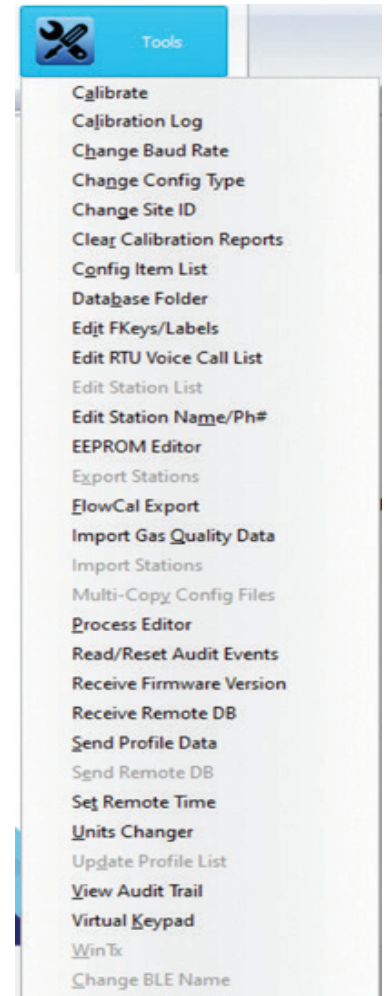


The **Tools Menu** contains functions primarily related to the system level. Upgrading firmware, generating station backups, calibration logs, and audit trail events can all be accessed through this menu. In addition, these software tools provide the user the ability to receive or reload the database, load profile data for transducers, and view any element in the RTU database using the Virtual Keypad or Process Editor.

Alarms that are still active or that have not been acknowledged can be reviewed using the Alarm button and all alarms are stored in time stamped records that log the Alarm Type, Setpoint, Extreme Value, and the current value.

The **Select Site** feature is used to keep connection details stored for easy connection to wireless sites and sites that do not have a standard baud rate configured. Within the Select Site feature there is a search function for easy identification of the desired station.

Data can be directly exported from the **History Grids** to a csv file or copied to the clipboard with just a couple clicks of the mouse. The data range feature can be used to scale the data to the exact period of time required for data export.



HIGHLIGHTS - Features and Benefits:

- Auto unit identification
- Formatted and CSV Report generation
- Calibration wizards for ease of use
- Simple history data collection
- Easy tab navigation for data viewing and software configuration
- Data export for synchronization to the Talon™ Family of Products and sharing with other technicians
- Windows® Operating System: Server 2003, 2008, 2012, 2016, 2019; Windows® 7, 8.1, 10, 11
- Circular Charting
- Direct, dial-up, or TCP/IP based connection
- Live Graphing on select process items

Virtual Keypad

The Virtual Keypad provides the same access to field device operating and debug modes as the hardware keypad versions. It simulates the keypad and display used by the field device. The Virtual Keypad can be used to execute functions which are normally performed from the field device keypad.

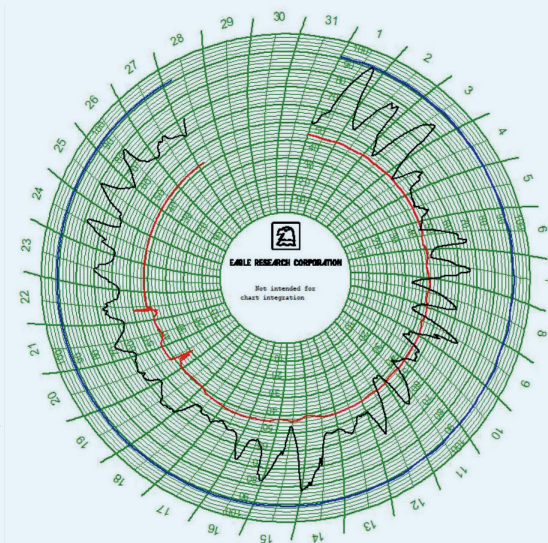


Virtual Keypad Functions:

- Check and/or Clear alarms
- Access Configuration, Calibration, and Debug modes
- Access different Labels configured in the field device
- Work with system passwords
- View the Firmware Version and device serial number

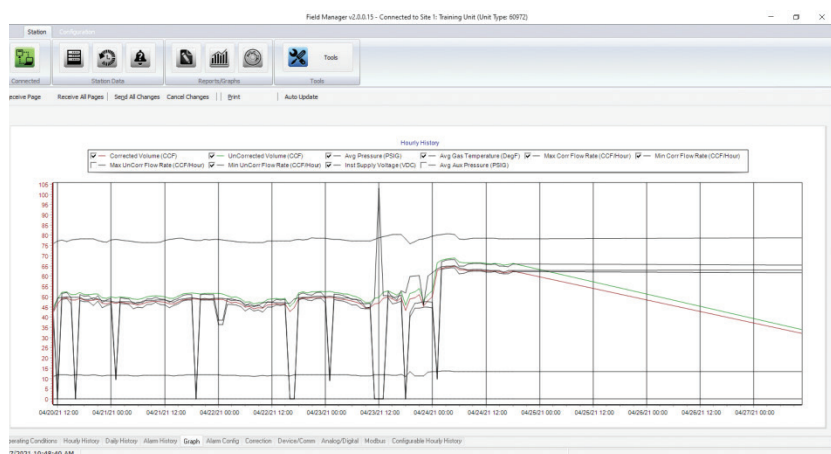
Circular Charting Feature

- Provide circular chart data from any Eagle Research Corporation Flow Computer, Volume Corrector, or Pressure Recorder.
- Facilitate viewing operational data for well tenders as well as regulator station operators and engineers.
- Allows Multi-Pen-and-color selection for configurable displays with selectable pen order.
- Generate charts that can be printed on standard ink jet printers or wide carriage printers for actual chart size.



Live Graphing Feature

Field Manager™ allows live graphing on select process items.



Training Unit				Switch to Standard View
System Info				
Meter ID	0	125986	RTU Serial Number	
Supply Volts	13.45	82.12	Casa Temperature	DegF
RTU Date	04/27/2021	10:46:53	RTU Time	
Corrected Volume Info		UnCorrected Volume Info		
Corrected Volume	12037.59	CCF	UnCorrected Volume	12672.40
Corrected Flow Rate	62.593	CCF/Hour	UnCorrected Flow Rate	66.335
Current Hour Corr Volume	3.11	CCF	Current Hour UnCorr Volume	3.30
Previous Hour Corr Volume	31.99	CCF	Previous Hour UnCorr Volume	33.90
Current Day Corr Volume	3.11	CCF	Current Day UnCorr Volume	3.30
Previous Day Corr Volume	530.90	CCF	Previous Day UnCorr Volume	562.10
Current Month Corr Volume	12037.59	CCF	Current Month UnCorr Volume	12672.40
Previous Month Corr Volume	0.00	CCF	Previous Month UnCorr Volume	0.00
Analog Info		Energy		
Pressure	0.01	PSIG	Accumulated Energy	1205.860
Previous Hour Avg Pressure	0.01	PSIG	Energy Flow Rate	6.260
Previous Day Avg Pressure	0.01	PSIG	Flow Time	
Gas Temperature	79.00	DegF	Current Hour Flow Time	2.000
Previous Hour Avg Temp	79.76	DegF	Current Day Flow Time	2.000
Previous Day Avg Temp	79.39	DegF	Current Month Flow Time	33
Aux Pressure	0.00	PSIG	Current Hour Pulses	33
Previous Hour Avg Pressure	0.00	PSIG		
Operating Conditions: Hourly History Daily History Alarm History Graph Alarm Config Correction Device Config Analog/Digital Modbus Configurable Hourly History				
4/27/2021 10:47:19 AM				

Edit Menu

Data Viewing and Software Configuration tabs.