

Job Name _____
 Job Location _____
 Engineer _____
 Approval _____

 Contractor _____
 Approval _____
 Contractor's P.O. No. _____
 Representative _____

GOVERNOR PF400DC 10 PSIG

Line Gas Pressure Regulators Sizes 3/8" – 1/2" NPT

Pietro Fiorentini's **PF400** line of gas regulators are designed to comply with the latest CSA and international standards for regulators suitable for indoor and outdoor installations with no modifications. The PF400 family of regulators are ideal for a wide range of applications. The materials and soft parts used in the construction of the PF400 regulators make them suitable for use with natural gas, LPG, Propane air and other non-corrosive gases.

All PF400 regulators can achieve high outlet pressure accuracy regardless of Inlet pressure variation. The external vent limiter reduces piping costs and the need for costly vent piping for indoor installations and complies with CSA guidelines.*

The following Features and Specifications that give you Safe, Reliable and High Performance

SPECIFICATIONS

- The PF400 is a 2 stage design where the first regulator cuts to 1.7 PSIG and the control regulator cuts to the final set pressure.
- The PF400 is CSA Certified external vent limiter option for indoor installations.* Can be installed in any position.
- The PF400 incorporates a Nitrile molded diaphragm for added safety and greater reliability of service.
- The PF400 incorporates a lever operated valve design gives you for increase capacity, high turndown and stable regulation from low to high flows.
- The PF400 incorporates a Nitrile valve and a machined orifice that provides complete lockup in absence of gas low, 100% bubble tight shutoff.
- Approved ANSI Z21.80A-2019 / CSA 6.22A-2019 Class I for outlet pressures from 2" W.C. to 14" W.C. certified.
- Approved ANSI Z21.18B-2019 / CSA 6.3B-2019 for outlet pressure up to 10 PSIG certified
- PF 400 has a built built in inlet filter
- Temperature Range: -40°F to 150°F
- Max. inlet Pressure: CSA rated - 2 PSIG For Non CSA - 10 PSIG
- Maximum Emergency Inlet Exposure Pressure: 65 PSIG
- Suitable for Indoor or Outdoor Installation***
- Connections: 3/8" & 1/2"
- Suitable for use with Natural Gas, LPG, and other non-corrosive, clean gas
- 1/8" NPT Vent connection

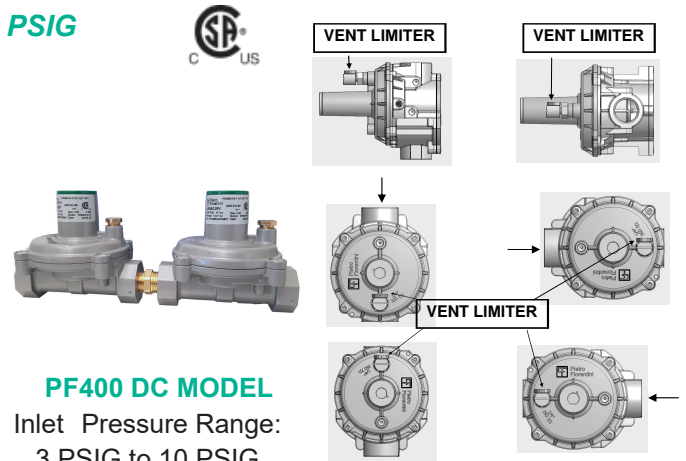
*As Approved by Local Codes and Standards

** Vent Limiters should be removed for outdoor installation **

Brass vent limiter must be removed for outdoor installations certified

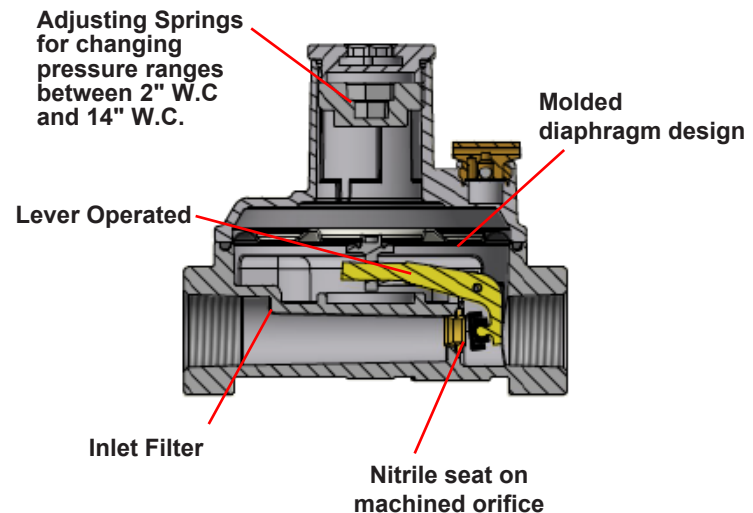
MATERIALS

- Body & Cover: Aluminum Alloy
- External Coatings: Polyurethane paint upon request
- Diaphragm, O Rings & Valve: Nitrile Rubber
- Diaphragm Pan: Aluminized Steel



Note: Multi vent limiter position approved but flat top must face up.

Basic Design Feature



*Spring is CSA outlet pressure certified

**As Approved by Local Codes and Standards

Brass vent limiter must be removed for outdoor installations

OUTLET SPRING RANGE

- Red 2.5" W.C. to 7" W.C. #
- Black 7" W.C. to 10" W.C. #
- Yellow 10" W.C. to 14" W.C. #
- Violet 1.65 PSIG to 2 PSIG

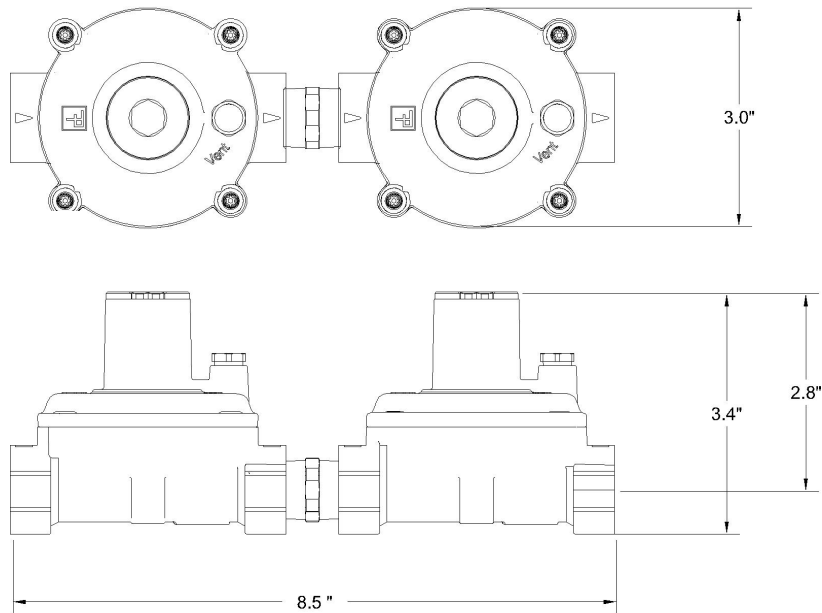
NOTE # Spring is CSA outlet pressure certified

PF400 DC MODEL

CAPACITY FOR MULTI-APPLIANCE SERVICE (SCF/H)				
		Operating Inlet Pressure		
Outlet Pressure Set Point		2 PSIG	5 PSIG	10 PSIG
PF400 1/2"	2.5" W.C.	400	400	400
	7" W.C.	400	400	400
	10" W.C.	400	400	400
	14" W.C.	400	400	400
PF400 3/8"	2.5" W.C.	200	250	250
	7" W.C.	250	250	250
	10" W.C.	300	300	300
	14" W.C.	300	300	300
				Tab.2

Single appliance max capacity 140 SCF/H. The flow rate is the same with or without filter.

- *Spring is CSA outlet pressure certified
- **As Approved by Local Codes and Standards
- ***Brass vent limiter must be removed for outdoor installation



3.8"



Pietro Fiorentini product specifications in U.S. are provided for reference only. For precise application assistance, please contact Pietro Fiorentini Technical Service or your local distributor. Pietro Fiorentini reserves the right to change or modify product design, construction, specifications, or materials without prior notice and without incurring any obligation to make such changes and modifications on Pietro Fiorentini products previously or subsequently sold.