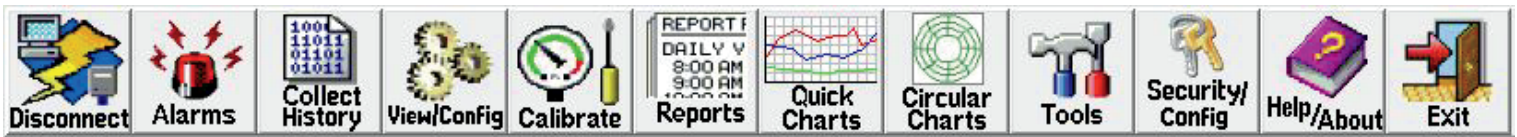




Field Manager™ is a Windows® based configuration application designed to support all Eagle Research Corporation® field devices on one common platform. Field Manager™ provides an easy to use group of functions to assist the user in setting up and configuring the field device, gathering data, viewing alarms, and calibration. It also features a variety of other useful tools for troubleshooting and configuring. Communication to the field device is through USB, RS232 laptop cable, or using the optional Bluetooth interface. A library of configuration databases simplifies the identification of standard device types in the field. The software matches the field device to a corresponding device type automatically and displays the appropriate set-up forms for the user.



## Features and Benefits:

- Auto unit identification
- Easy tab navigation
- Calibration wizards
- Circular Charting
- Data export synchronization to Talon™ Family of Products
- Windows® Operating System: Server 2003, 2008, 2012; Windows® 7, 8.1, 10
- Simple history data collection
- Direct, dial-up, or TCP/IP based connection
- Live Graphing on select process items

The Tools Menu page contains functions primarily related to the system database level of the field RTU. Standard device types in the field are identified using a library of configuration database. The software matches the field RTU to a device type and display the appropriate set up forms for the users.

Edit Labels/FKeys	Receive Remote dBase	Edit Station List
Change Site ID	Receive Firmware Version	Multi-Copy Config Files
Virtual Keypad	Send Profile Data	Units Changer
Launch WinTx	Send Remote dBase	Configuration Item List
View Calibration Log	Set Remote Time	EEPROM/Config Editor
Edit Station Name/PH#	Audit Trail/Event Viewer	Change Baud Rate
Reset Audit Trail/Events	Import Station(s)	
Export Station(s)	Edit RTU Voice Call List	Data Logger
Clear Calibration Reports	Database Folder	

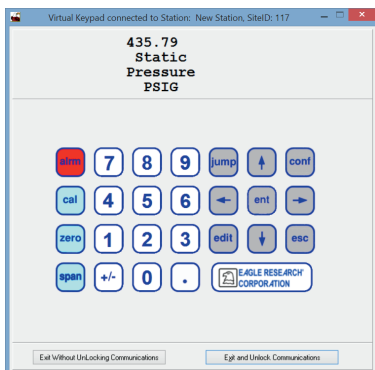
## Functions include:

- Edit Labels/Fkeys
- Change Site ID
- Launch Virtual Keypad
- Launch WinTX
- View Calibration Log
- Edit Station Name
- Receive Remote dBase
- Receive Firmware Version
- Send Profile Data
- Send Remote dBase
- Set Remote Time

These software tools give the user the ability to receive or reload the database, load profile data for transducers, and view any element in the RTU database using Virtual Keypad.

## Virtual Keypad

The Virtual Keypad provides the same access to field device operating and debug modes as the hardware keypad versions. It simulates the keypad and display used by the field device. The Virtual Keypad can be used to execute functions which are normally performed from the field device keypad.

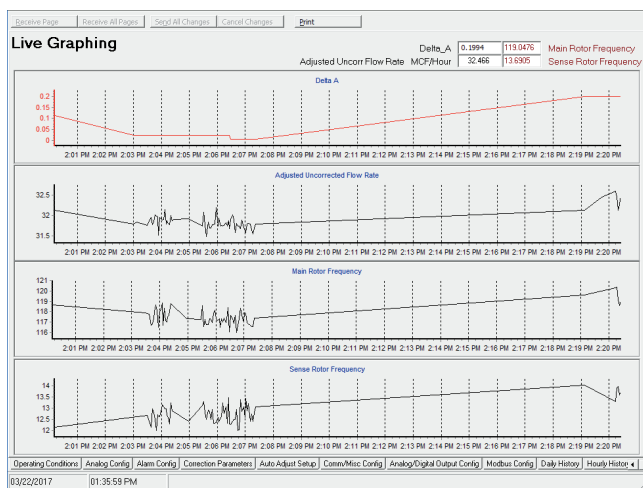


## Virtual Keypad Functions:

- Check and/or clear alarms
- Access configuration, calibration, and debug modes
- Access different labels configured in the field device
- Work with system passwords
- View the firmware version, and device serial number

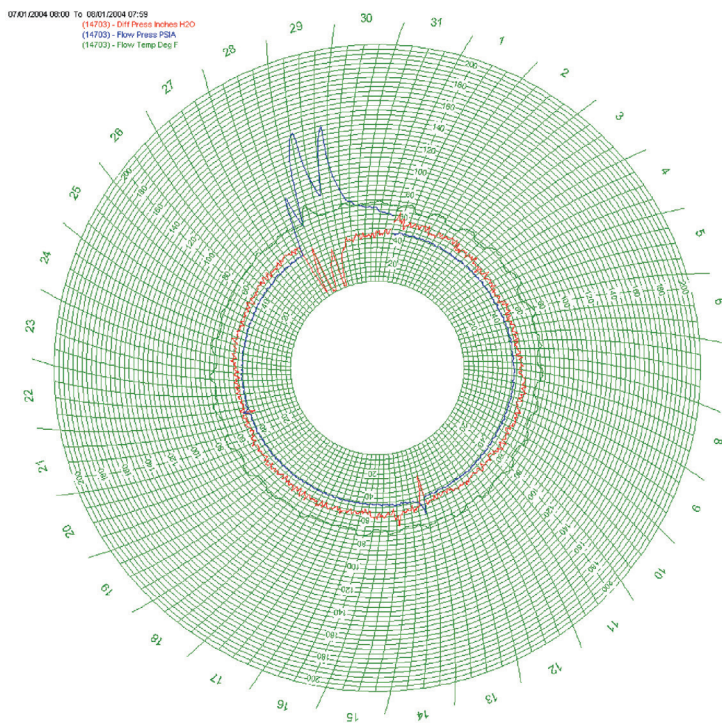
## Live Graphing Feature

Field Manager™ allows live graphing on select process items.



## Circular Charting Tools:

- Provide circular chart data from any of Eagle Research Corporation's Flow Computers, Volume Correctors, and Pressure Recorders.
- Facilitate reviewing operational data for well tenders as well as regulator station operators and engineers.
- Allows Multi-Pen and color selection for configurable displays and pen order.
- Generate charts that can be printed on standard ink jet printer or wide carriage printer to actual chart size.



Circular Charting