

Residential Meters

Residential Diaphragm Meter Modules



TEMPERATURE COMPENSATED MODULE

NON-TEMPERATURE COMPENSATED MODULE



Sensus Diaphragm Meter Replacement Modules for Taking the Measure of Tomorrow

The Sensus replacement modules make it quick, easy and cost-efficient to repair residential gas meters. Buying a replacement module is like buying a new meter because a replacement module equals new meter life.

Sensus assembles replacement modules with the same standards as all of our meters – outstanding, dependable and accurate.

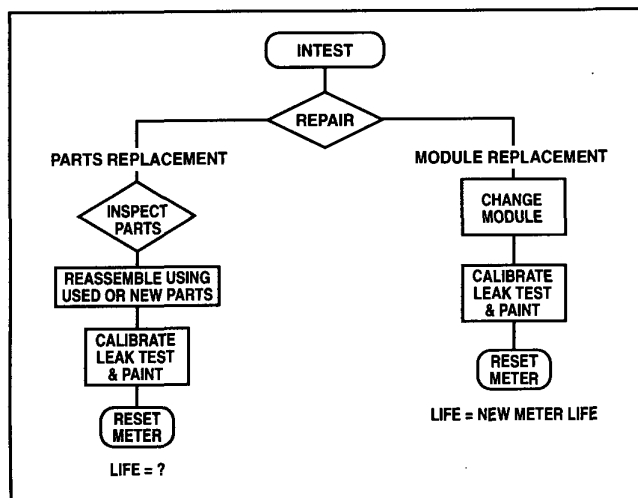
Replacement

Replacement is simple. Just remove the screws holding the valve plate; then lift the old measuring module out and set a new Equimeter module in place. Now the meter is ready to be calibrated, leak-tested, painted and set. The process is that simple and quick.

If you decide not to use a replacement module, the repair can become difficult, costly and timely. The repairman must:

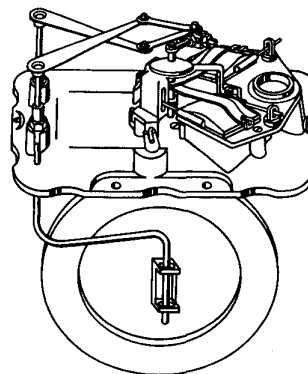
- take off the meter cover
- remove worn parts
- remove the crank bracket assembly, links, valves and check the stuffing box for binds
- clean the parts
- re-assemble the meter with used, cleaned or new parts
- The meter is then re-tested, leak-tested and repainted

After these steps a utility has a substantial investment in the meter. But no matter how good the repair job, only a few parts have been replaced or repaired. You now have a repaired meter, but that may not mean new meter life.

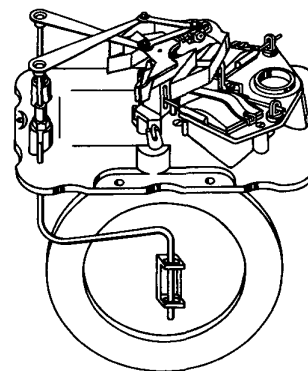


Converting Standard Meters to Temperature-Compensating Meters

Changing a standard meter to a temperature-compensating (T.C.) meter is as easy as replacing a used, worn-out module. Simply change-out the standard module and insert a new T.C. meter module. With ease of replacement like this, it makes good business sense to call Equimeter now.



Non-Temperature Compensated Module



Temperature Compensated Module



Part Numbers

METER	STANDARD	TEMPERATURE COMPENSATING
R-275/S-275/R-315	00163-502-06000	00163-502-07000
MR-8/MR-9/MR-5*	00163-502-19000	00163-502-20000
#415	00141-502-70000	00141-502-71000
MR-12*	00141-502-72000	00141-502-73000

*Denotes Metric

How To Order

To order a module, simply select the module part number from the table above. If you want any options (several of the more popular ones are shown), just specify the option number on the purchase order.

If you want an option package not shown as a standard option package, contact your salesman or regional sales office. We will get back to you with a quote on your special requirements.

Options

OPTION 1:

New Index
New Badge

OPTION 3:

New Handhole Plate Gasket
New Handhole Plate Rockseal Kit
New Handhole Plate Screws (3)
Plus all Features from Option 2

OPTION 2:

New Rockseal Index Box
New Index Box Gasket
New Index Mounting Screws (2)
New Index Box Screws (4)
Rockseal Plugs (2)
Plus all Features from Option 1

OPTION 4:

New Cover-to-Body Screws
R-200/RC-230/R-275/R-315 (10)
#415 (12)
Customer Badge
Stuffing Box Assembly
Plus all Features from Option 3

NOTE: All options are shipped in the same carton as module, unless otherwise specified.



805 Liberty Boulevard
DuBois, PA 15801
800-375-8875
Fax: (814) 375-8460
www.sensus.com/gas

All products purchased and services performed are subject to Sensus' terms of sale, available at either; <http://na.sensus.com/TC/TermsConditions.pdf> or 1-800-METER-IT. Sensus reserves the right to modify these terms and conditions in its own discretion without notice to the customer.

This document is for informational purposes only, and SENSUS MAKES NO EXPRESS WARRANTIES IN THIS DOCUMENT. FURTHERMORE, THERE ARE NO IMPLIED WARRANTIES, INCLUDING WITHOUT LIMITATION, WARRANTIES AS TO FITNESS FOR A PARTICULAR PURPOSE AND MERCHANTABILITY. ANY USE OF THE PRODUCTS THAT IS NOT SPECIFICALLY PERMITTED HEREIN IS PROHIBITED.