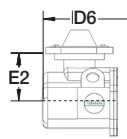
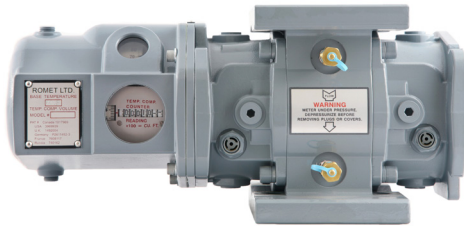
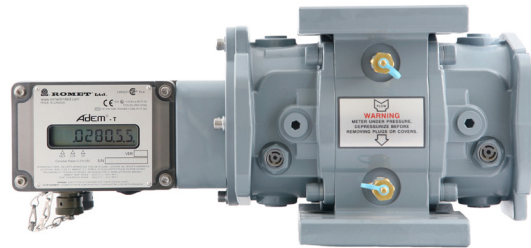
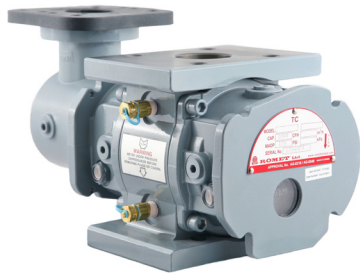




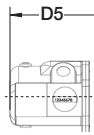
ROMET

Rotary Gas Meters

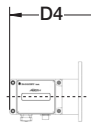
RMT600 - IMPERIAL



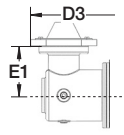
TCID



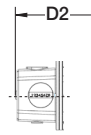
TC



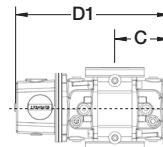
AdEM



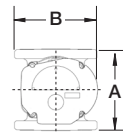
STDID / DCID



STD CTR
END INDEX



STD CTR
SIDE INDEX



Note: AMI/AMR adaptors available upon request.

METER SIZE	ANSI 125 FF FLANGE	A	B	C	D1	D2	D3	D4	D5	D6	E1	E2	WEIGHT (lbs)
RMT600	2"	6.75"	6.88"	4.27"	12.01"	13.49"	14.95"	15.15"	14.55"	14.55"	4.00"	4.00"	17-27

IMPERIAL RMT600 2" FLANGE CONNECTION

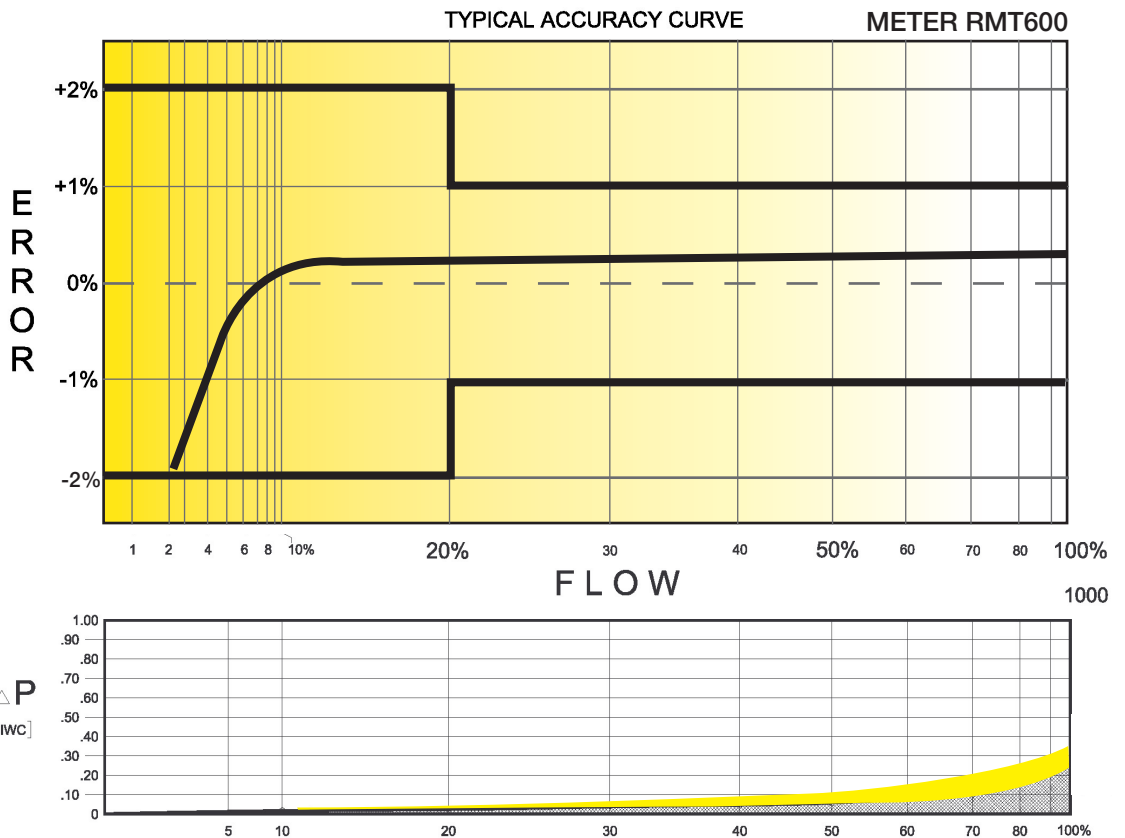
TECHNICAL SPECIFICATION

Connection (Flanged)	ANSI 125 FF	2"
MAOP	(psig)	175
Flow Capacity	(cfh)	600
Rangeability* @ $\pm 2\%$ / $\pm 1\%$ Error		1:45 / 1:25
Average Start Rate	(cfh)	0.48
Average Stop Rate	(cfh)	0.38
Differential @ 100 % Flow [AIR/N.G.]	(I.W.C.)	0.36 / 0.22
Instrument Drive Rate	(cf/rev)	10
LF Pulser (Optional)	(cf/rev)	10

*Note: It should be noted, that moving parts in the meters with greater rangeability ratio are made to high class accuracy and tight tolerances. Improper installation, stresses on piping system due to temperature changes, settling and gas conditions can create a risk of meter rejection.

CORRECTED FLOW CAPACITY AND TYPICAL ACCURACY GUIDE

RMT600 METER (SCFH)	
Gauge Pressure P.S.I.G. 0.25	RMT600 Qmax = 600ft ³ /hr
2	627
5	790
10	994
15	1197
20	1401
25	1605
50	2623
75	3641
100	4660
125	5678
150	6697
175	7715



ROMET

Measuring energy globally

Canada 905-624-1591 USA 1-800-387-3201
www.rometlimited.com • romet@rometlimited.com

The values quoted are typical of normal production. They do not constitute a specification. Romet Limited reserves the right to change any information in this literature without notice. All of the information and data in this literature has

been carefully compiled and thoroughly checked. However, Romet Limited will not assume responsibility for any possible omissions or errors. Romet is a registered trademark.