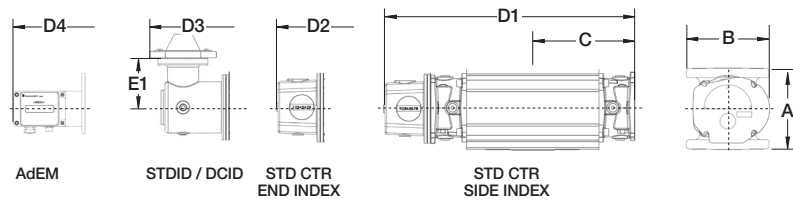
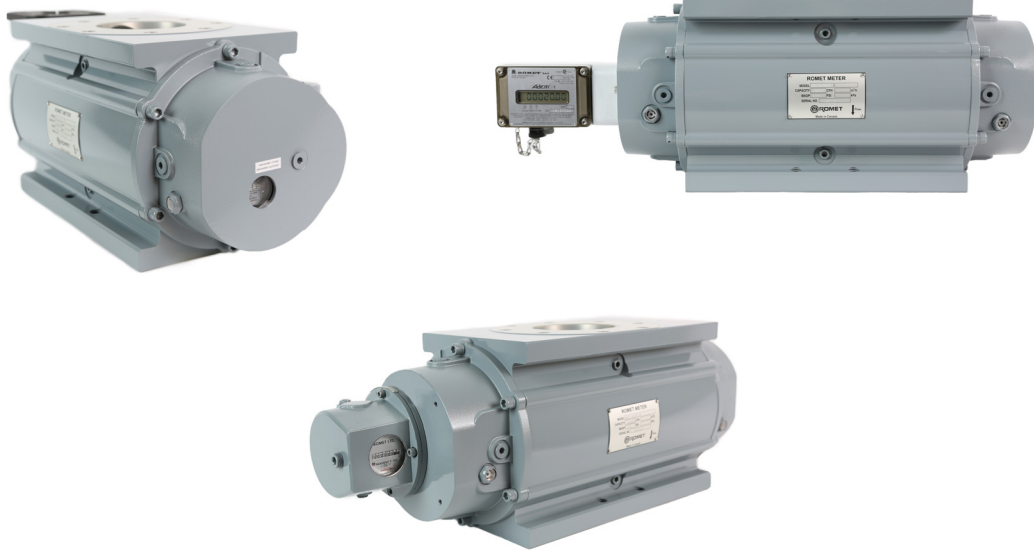




**ROMET**

# Rotary Gas Meters

## RMT16000 - IMPERIAL



**Note: AMI/AMR adaptors available upon request.**

METER SIZE	ANSI 125 FF FLANGE	A	B	C	D1	D2	D3	D4	E1	WEIGHT (lbs)
RMT16000	4"	9.5"	8.25"	10.27"	24.02"	25.50"	26.96"	27.16"	4.00"	70.5-76.5

Meets or exceeds ANSI B109.3

# IMPERIAL RMT16000 4" FLANGE CONNECTION

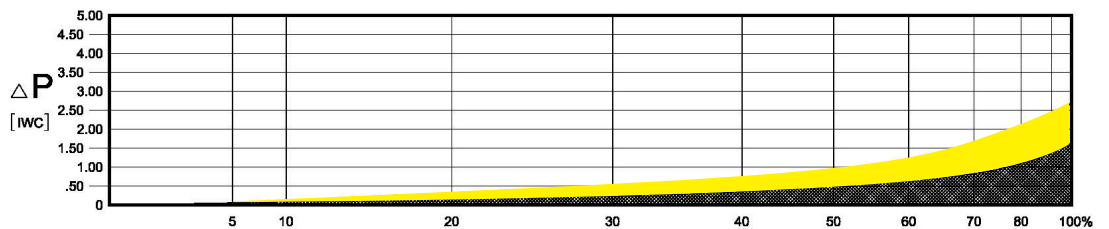
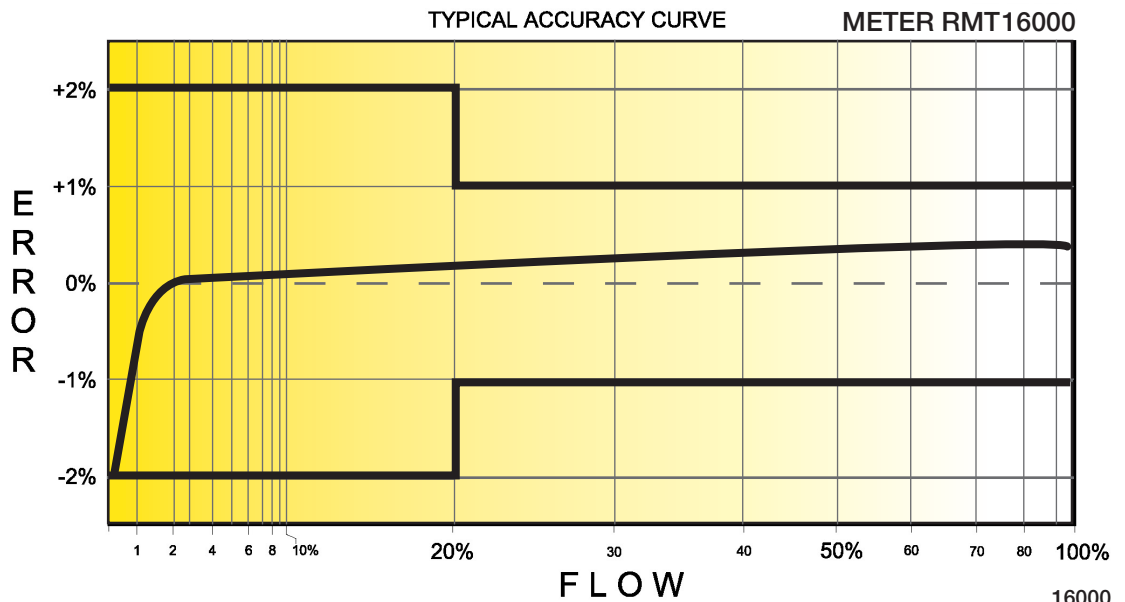
## TECHNICAL SPECIFICATION

Connection (Flanged)	ANSI 125 FF	4"
MAOP	(psig)	175
Flow Capacity	(cfh)	16000
Rangeability* @ ±2% / ±1% Error		1:200 / 1:150
Average Start Rate	(cfh)	2.15
Average Stop Rate	(cfh)	1.30
Differential @ 100 % Flow [AIR/N.G.]	(I.W.C.)	2.67 / 1.60
Instrument Drive Rate	(cf/rev)	10 or 100
LF Pulser (Optional)	(cf/rev)	10 or 100

\*Note: It should be noted, that moving parts in the meters with greater rangeability ratio are made to high class accuracy and tight tolerances. Improper installation, stresses on piping system due to temperature changes, settling and gas conditions can create a risk of meter rejection.

### CORRECTED FLOW CAPACITY AND TYPICAL ACCURACY GUIDE

RMT16000 METER (SCFH)	
Gauge Pressure P.S.I.G. 0.25	RMT16000 Qmax = 16000ft <sup>3</sup> /hr
2	16728
5	21073
10	26504
15	31935
20	37366
25	42797
50	69952
75	97108
100	124263
125	151419
150	178574
175	205730



# ROMET

Measuring energy globally

Canada 905-624-1591 USA 1-800-387-3201  
[www.rometlimited.com](http://www.rometlimited.com) • [romet@rometlimited.com](mailto:romet@rometlimited.com)

The values quoted are typical of normal production. They do not constitute a specification. Romet Limited reserves the right to change any information in this literature without notice. All of the information and data in this literature has

been carefully compiled and thoroughly checked. However, Romet Limited will not assume responsibility for any possible omissions or errors. Romet is a registered trademark.